

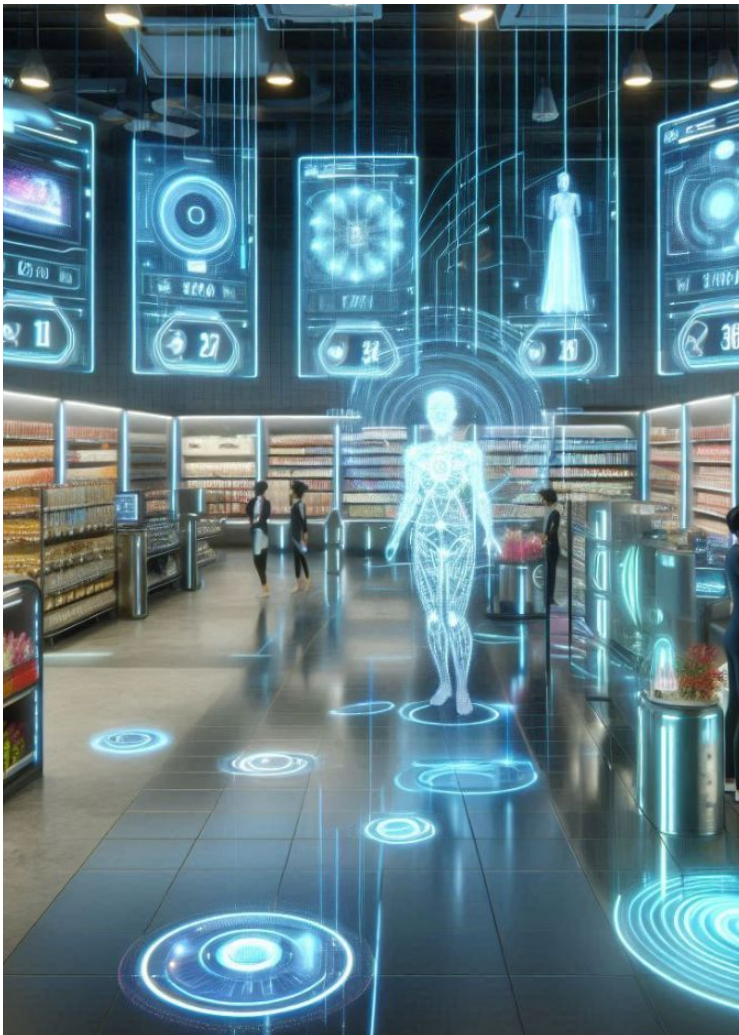


# Shaping Tomorrow

## 12 Futuristic Innovations Redefining Industries

A Strategic Blueprint for Market Disruption and Transformational Business Opportunities in the Age of Autonomous AI and Total Experience

CHADEL RESEARCH AND  
STRATEGY CONSULTING



## Autonomous Retail Outlets

The Store That Thinks for Itself: The Future of Shopping

**Concept** Autonomous retail outlets leverage AI supercomputing to analyze real-time customer behavior, anticipate demand, and personalize shopping experiences. Humanoid robots serve as concierge assistants, managing shelf organization, customer queries, and cleaning. The store dynamically adjusts pricing and offers, creating a seamless shopping journey.

**Use Case** In New York City, an autonomous grocery store uses AI to predict peak hours, customer needs and pre-order fresh stock. A customer picks up preselected items tailored to their dietary preferences. Robots deliver their groceries while offering recipe suggestions based on the purchase.

**Probability** High

**Time Frame:** 5–7 years

**Business Impact** Reduces operational costs, enhances customer experience, and enables 24/7 availability.



## Digital Twin for Personal Finance

### Your Financial Avatar: Intelligent Wealth Planning

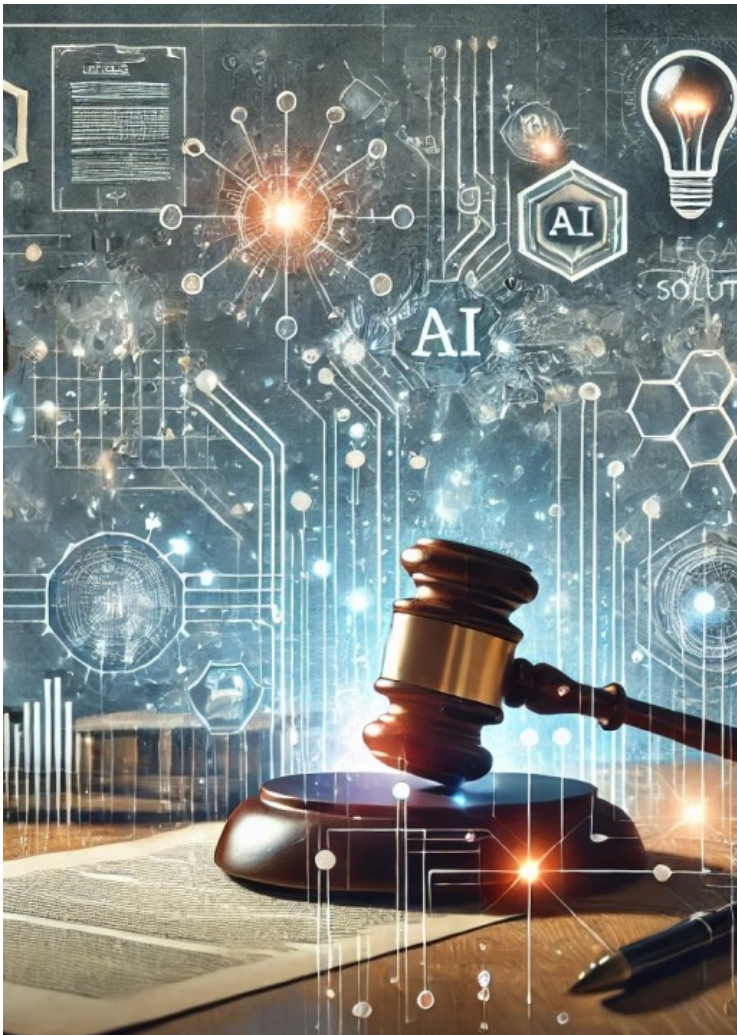
**Concept** Digital twins simulate users' financial lives by integrating real-time banking, borrowing, spending, and investment data. These AI-driven twins create predictive models to identify future risks and opportunities, offering multiple scenarios and insights like optimizing mortgage repayments or retirement planning.

**Use Case** A freelancer in Singapore uses their financial twin to visualize the impact of taking a sabbatical. The twin predicts cash flow changes, adjusts their savings strategy, and suggests a mix of investments to ensure long-term stability while accommodating the break.

**Probability** Medium

**Time Frame** 3–5 years

**Business Impact** Democratizes access to financial planning and revolutionizes customer engagement in banking.



## Autonomous Legal Advisory Platforms

### Your AI Attorney: Law at the Speed of Thought

**Concept** Autonomous legal systems powered by generative AI and autonomous agents handle end-to-end legal tasks, including drafting, compliance checks, and real-time dispute resolution. Built-in AI supercomputing ensures contextually accurate advice and language.

**Use Case** A startup in Berlin consults the platform to create IP agreements for new technology. The AI drafts contracts, assesses risk factors, and negotiates licensing terms with potential partners—all without human intervention, saving weeks of effort.

**Probability** Medium

**Time Frame** 3–5 years

**Business Impact** Reduces legal costs, improves precision and accessibility, and accelerates contract cycles.



## Autonomous AI-Governed Cities

Cities Run by Intelligence, Not Bureaucracy

**Concept** AI-governed cities integrate humanoid robots, 6G+, and supercomputing to optimize infrastructure, utilities, and emergency services. AI predicts and resolves issues before they arise, creating hyper-efficient urban living.

**Use Case** A resident in Dubai receives an alert for optimal water usage during a heatwave. Meanwhile, AI reroutes excess solar energy to charge public transport systems, reducing strain on the grid and keeping the city running seamlessly.

**Probability** Medium

**Time Frame** 7–15 years

**Business Impact** Creates sustainable, hyper-efficient urban environments, reduces operational costs, and improves citizen quality of life.



## Decentralized Privacy-First Healthcare Records

Your Health, Your Control

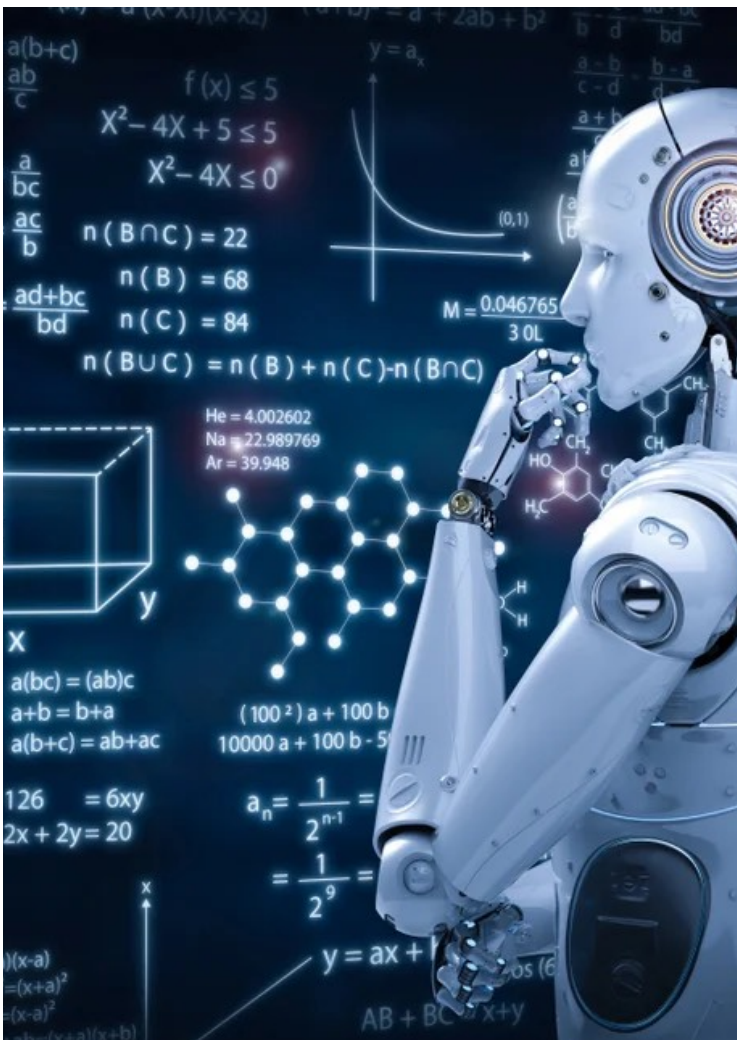
**Concept** Patients manage their medical records through blockchain-secured systems, ensuring access only when granted by the individual. This decentralized model improves privacy while enabling global healthcare access.

**Use Case** A remote worker in Thailand uses the system to share vaccination records with a clinic in Germany, enabling fast onboarding for treatment without compromising data privacy.

**Probability** High

**Time Frame** 4–6 years

**Business Impact** Enhances patient trust, simplifies cross-border healthcare, allows system interoperability and improves data security.



## Personalized Education Ecosystems

Tailored Learning for Every Mind

**Concept** Adaptive learning platforms leverage DToC, 6G+, and AI to provide real-time tailored curriculums. These systems use cognitive data to design engaging, personalized, gamified lessons and track progress at an individual level.

**Use Case** A student in Kenya accesses a virtual tutor via their smartphone. Lessons adjust dynamically based on their interests, offering real-world applications for STEM topics and preparing them for global certifications.

**Probability** High

**Time Frame** 5–10 years

**Business Impact** Improves learning outcomes, democratizes education, and closes skill gaps globally.



## Disinformation Shield for Businesses

Protecting Truth in a World of Fake News

**Concept** This AI-powered tool scans digital ecosystems to identify and neutralize false narratives about brands. Using a cybersecurity mesh, it monitors trends, validates sources, and promotes authentic content to maintain brand trust.

**Use Case** A global electronics brand in California faces a viral fake news campaign. The disinformation shield detects the source, suppresses false content on social platforms, and boosts real testimonials, restoring public confidence.

**Probability** High

**Time Frame:** 3–5 years

**Business Impact** Safeguards brand equity, increases consumer trust, and protects against reputational loss.



## AI-Enhanced Smart Urban Logistics

### Drones and Robots: Reimagining Urban Deliveries

**Concept** Autonomous delivery systems integrate 6G networks and humanoid robots for optimized last-mile solutions. Real-time data ensures efficiency in high-traffic zones, while robots interact with customers for deliveries, creating a futuristic logistics experience.

**Use Case** In Mumbai, AI detects heavy rainfall affecting delivery routes. Autonomous drones reroute to dry zones, while robots use waterproof designs to complete the last-mile delivery of medical supplies to customers in high-rise apartments.

**Probability** High

**Time Frame** 8–10 years

**Business Impact** Optimizes delivery times, reduces emissions, and transforms urban logistics efficiency.



## Blockchain-Enabled Talent Marketplaces

### Decentralized Hiring: Talent Without Borders

**Concept** Blockchain and AI-TRISM verify candidate credentials and portfolios, eliminating fraud in hiring. Platforms automate matching processes, ensuring global access to talent while securing contracts and payments in real time.

**Use Case** A Canadian firm hires a blockchain-verified graphic designer from Nigeria within hours. Smart contracts ensure payment upon milestone delivery, while AI predicts the freelancer's compatibility with the team based on personality traits.

**Probability** Medium

**Time Frame** 5–7 years

**Business Impact** Increases transparency, reduces hiring friction, and enables global talent access.



# Precision Healthcare

Leveraging AI to Revolutionize Patient Care and Outcomes

**Concept** AI-driven personalized medicine uses generative AI and machine learning to analyze an individual's genetic makeup, lifestyle, and medical history to create highly customized treatment plans. This approach moves away from the traditional "one-size-fits-all" model of healthcare, enabling precision medicine that is tailored to each patient's unique needs.

**Use Case** A 45-year-old with a family history of diabetes and heart disease joins an AI-powered preventative healthcare program. The AI analyzes data including genetic and lifestyle habits. It identifies risks and generates a personalized prevention plan—including diet, exercise, and early interventions—reducing disease likelihood.

**Probability** High

**Time Frame** 5–10 years

**Business Impact** Increases revenues enhances market expansions, enhances lifespan and reduces costs.



CHADEL RESEARCH AND  
STRATEGY CONSULTING